



420 Highland Ave. Ext, Middletown, N.Y. 10940  
 Office: 845-360-5363 | Toll Free: 800-781-8027 | Fax: 775-255-3044  
 © RTG Lighting, Inc. | sales@rtglighting.com

# HZ100 Series LED

## Hazardous Locations

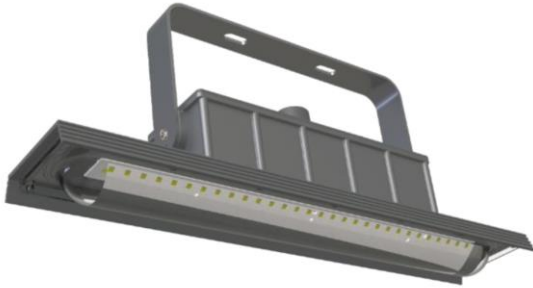
### PROJECT INFORMATION

Project Name	Type
Catalog No	Date

### DESCRIPTION

This luminaire can be used as a replacement of traditional fluorescent lamps, which can provide general illumination in hazardous locations, such as Oil Refineries and Gas Stations, Oil and Gasoline Loading Docks, Distilleries, Paint Manufacturing Plants, Mines and Vessels.

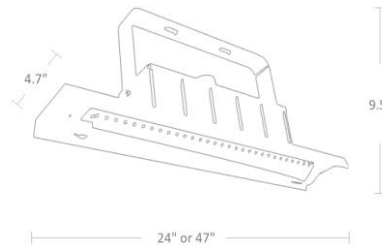
Ratings and Certifications: NEMA 4X; IP66; UL 1598/UL1589A/UL844; CSA C22.2 No. 137/No. 250.0, Class I, Division 2, Groups A, B, C, D Class II, Division 1, Groups E, F, G Class II, Division 2, Groups E, F, G Class III; Marine and Wet Locations; IECEX; ATEX.



### FEATURES

- Surface Mount and Pendant Mount Options Available
- Wide and Narrow Optic Outputs for Uniform Illumination
- High Vibration Resistance
- Copper-free aluminum housing
- L70 Rated for 150,000 Burning Hours
- IP66

### DIMENSIONS



### WARRANTY

10 Years

Example

<b>HZ100</b>	20W 2,800 Lm 2'	4000K	200-480V	SM	DIM	-
--------------	-----------------	-------	----------	----	-----	---

### ORDERING INFORMATION

HZ100	Watts / Lumens / Length	Color Temp	Voltage	Mounts	Options	Finish Options
	10W 1,400 Lm 2'	4000K, 5000K	100-277V or 200-480V	Surface Mount (SM) Pendant (PE)	Dimmable (DIM)	-
	20W 2,800 Lm 2'					
	20W 2,800 Lm 4'					
	30W 4,200 Lm 4'					
	40W 5,600 Lm 4'					
	50W 7,000 Lm 4'					
	60W 8,400 Lm 4'					